

21242 HALLTON DR. – BRISTOL, IN



LOFT HOME FEATURES

- Large open Great room
- Kitchen with walk-in hidden pantry
- Black stainless steel appliances
- 9ft Ceilings on the 1st Floor
- Vesta metal porch ceiling accents
- Select composite siding
- Large covered front porch

 3  2.5  2

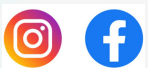
- Quartz Countertops
- Andersen casement windows
- Large patio doors for maximum light
- Fireplace with stone accents
- Large Covered patio
- Modern iron stair railing
- 2nd Floor Flex room
- Engineered hardwood floors

HOME PRICE:	\$ 777,500.00
LOT 25 PRICE:	\$ 65,400.00
LANDSCAPE & IRRIGATION:	\$ 22,000.00
TOTAL HOME PRICE:	\$ 864,900.00



DESIGN AND QUALITY - A TRADITION

CONTACT US



SCHROCKHOMES.COM

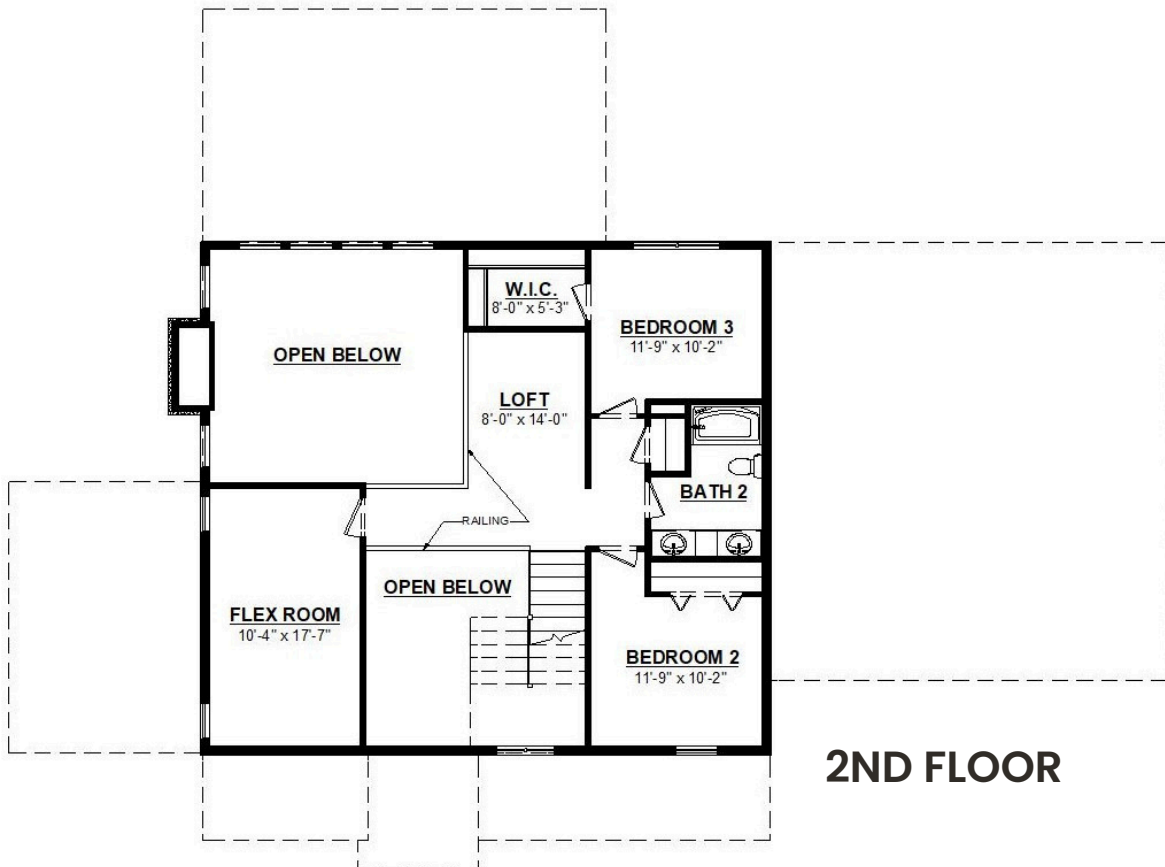
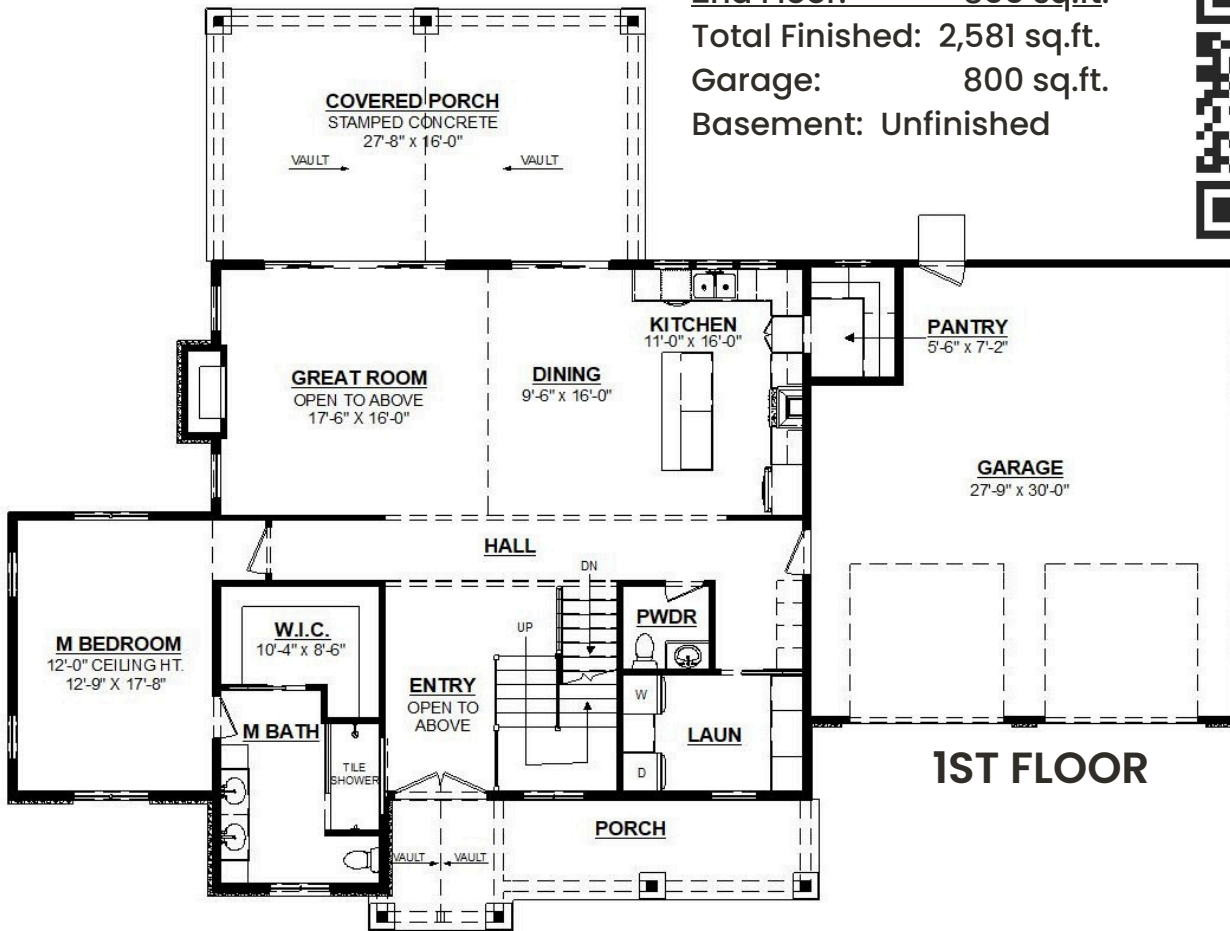


574-534-2706



2523 MESSICK DRIVE | GOSHEN, IN

1st Floor: 1,726 sq.ft.
 2nd Floor: 855 sq.ft.
 Total Finished: 2,581 sq.ft.
 Garage: 800 sq.ft.
 Basement: Unfinished



SCHROCKHOMES.COM



574-534-2706



2523 MESSICK DRIVE | GOSHEN, IN